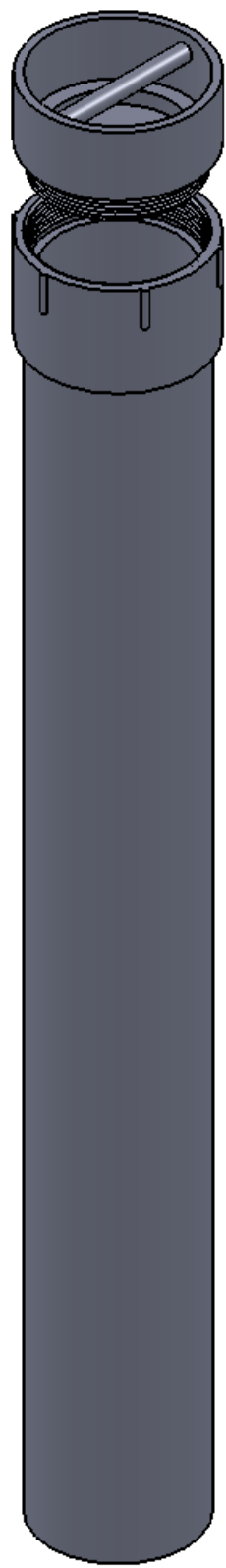


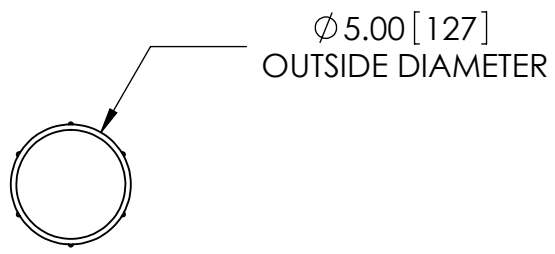
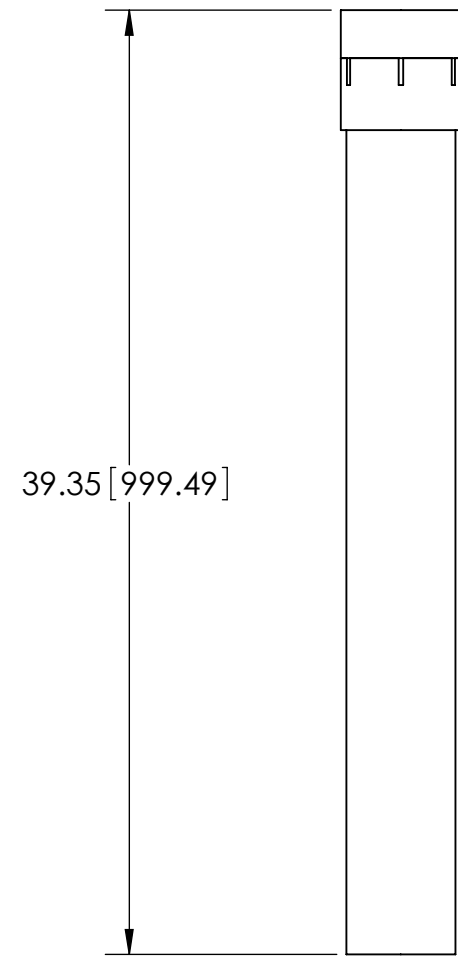
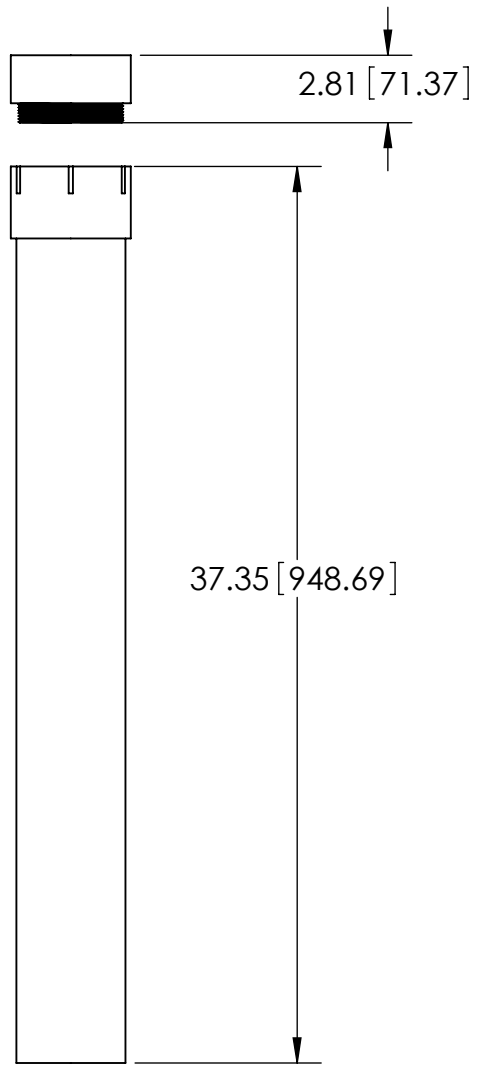
8 7 6 5 4 3 2 1

D
C
B
A

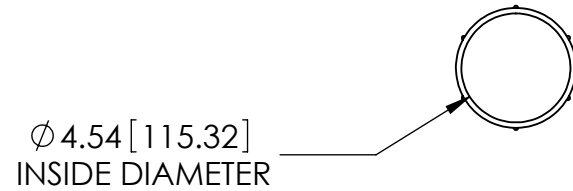
D
C
B
A



CASE: UN-CAPPED



Ø 5.00 [127]
OUTSIDE DIAMETER



Ø 4.54 [115.32]
INSIDE DIAMETER

CASE: CAPPED



UNIT WEIGHT: 7 lbs 8 oz (1334 g)

REVISED:	DATE:
DRAWING DATE:	
DRAWN BY:	
SHEET:] OF]	
NOTE: DO NOT SCALE DRAWING	

PROPRIETARY AND CONFIDENTIAL: THE INFORMATION CONTAINED IN THIS DRAWING IS THE SOLE PROPERTY OF WATER PLUS CORPORATION. ANY REPRODUCTION IN PART OR AS A WHOLE WITHOUT THE WRITTEN PERMISSION OF WATER PLUS CORPORATION IS STRICTLY PROHIBITED.

WATER PLUS CORPORATION

www.waterpluscorp.com
11245 Lillian Highway, Pensacola, Florida 32506
Phone: 800.842.9979 Fax: 850.455.5200

DESCRIPTION: Model CAS150 Sampling Rod Case

DWG. NO. CAS150

8 7 6 5 4 3 2 1